

S.I. Storey

LUMBER COMPANY, INC.

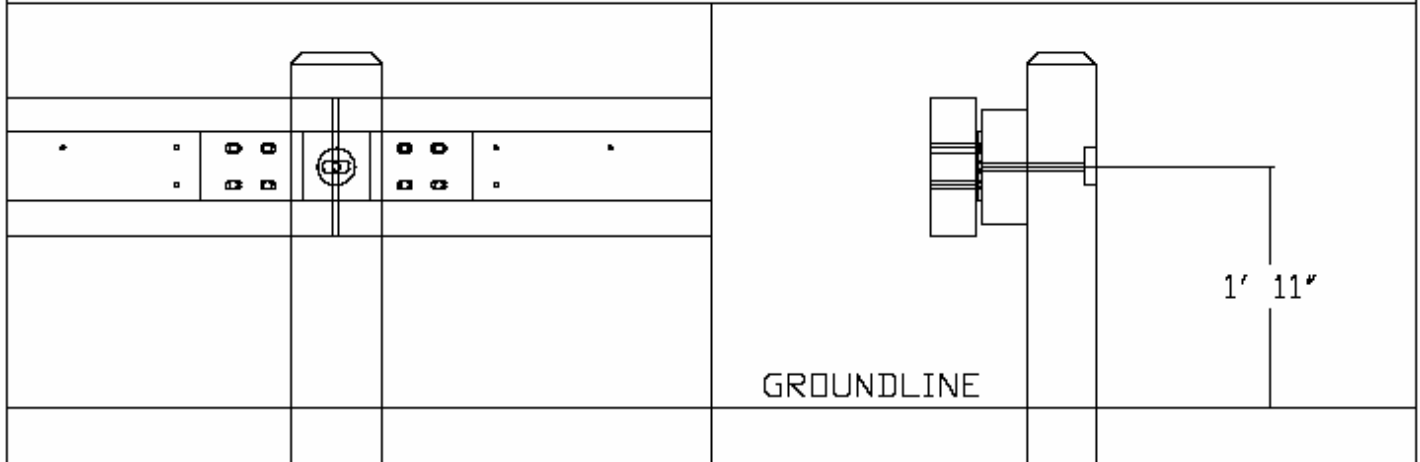
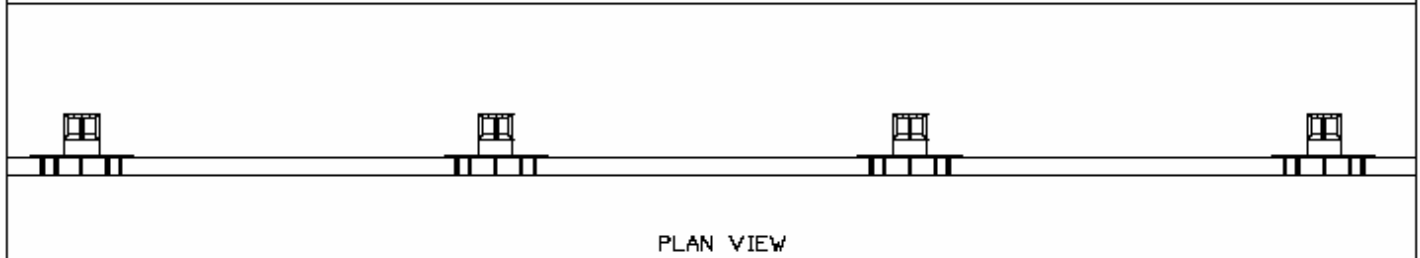
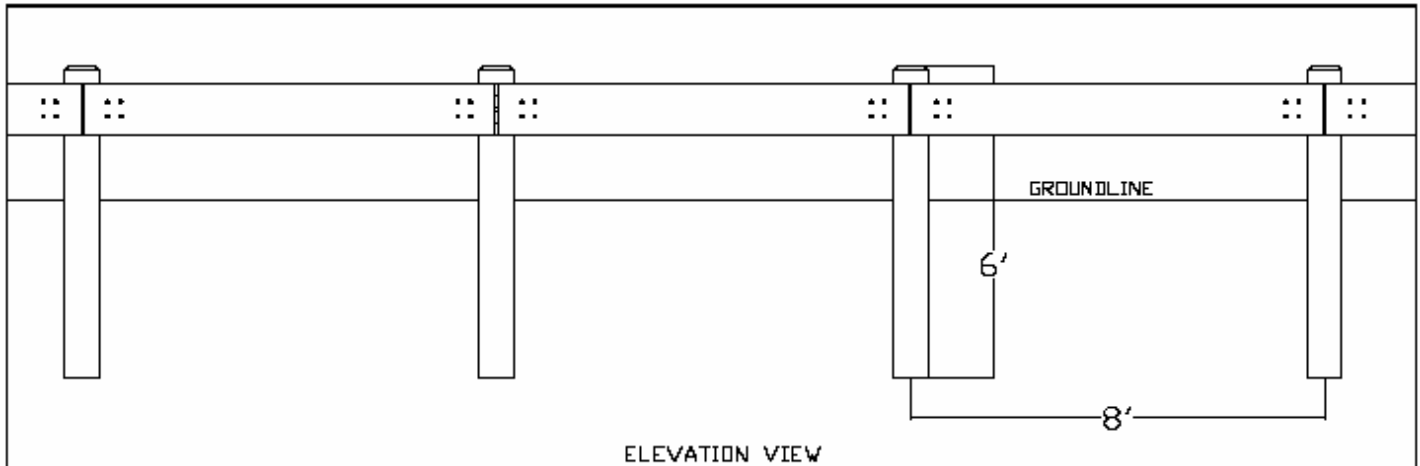
Since 1920



STREETGUARD PLUS™

Designed for use along public roadways and accepted by FHWA, StreetGuard Plus™ is the crash-rated solution for engineers, architects and developers where an aesthetic guard rail is preferred.





NOTES:

- 1) THE TIMBARRIER STREETGUARD PLUS SYSTEM IS CRASHWORTHY FOR LOW SPEED ROADWAYS UP TO 45 MPH, PER NCHRP-350 TEST LEVEL 2 CRITERIA.
- 2) ALL TIMBER COMPONENTS SHALL BE #1 GRADE SOUTHERN PINE, S4S, IN ACCORDANCE WITH SOUTHERN PINE INSPECTION BUREAU (SPIB) AND CCA PRESSURE TREATED IN ACCORDANCE WITH AMERICAN WOOD PRESERVERS (AWPA) STANDARD C14 TO A MINIMUM NET RETENTION OF 0.60 LBS./CU.FT.
- 3) ALL STEEL BACKING AND SPLICE PLATES SHALL BE ASTM A588 WEATHERING STEEL.
- 4) ALL FASTENERS SHALL CONFORM TO THE FOLLOWING ASTM SPECIFICATIONS: CARRIAGE BOLTS: A307 (A242 WEATHERING); NUTS: A563 TYPE 3H; WASHERS: F436 TYPE 3; LAG SCREWS: A307.
- 5) IF SHOULDER SLOPE IS STEEPER THAN 10:1 OR IF SLOPE BREAK IS LESS THAN 2' BEHIND BACK OF POST, INCREASE POST LENGTH TO 7' OR 8', AS REQUIRED.
- 6) DRIVING POSTS WITH A COMMERCIAL GRADE POST DRIVER IS THE PREFERRED METHOD OF INSTALLATION. HOWEVER, AUGERING A HOLE, BACKFILLING, AND COMPACTING ADEQUATELY SO AS NOT TO SETTLE AFTER INSTALLATION, IS PERMITTED.



S.I. Storey
LUMBER COMPANY, INC.

888-934-1605

www.timbarrier.com

COPYRIGHT 2007



STREETGUARD PLUS

PATENT PENDING